

The Japanese Society for Environmental Education
Announcement of the 35th Annual Meeting (Chiba)

Conference Theme: Flexible Environmental Education woven by community development

Contents & Program

August 29, 2024 (Thurs) – September 1, 2024 (Sun)

Host: The Japanese Society for Environmental Education
(The 35th Conference Organizing Committee)

Venu: Edogawa University, Komagi Campus
Online (Zoom)
Ichinoyanomori
Toneunga Koruukan

Table of Contents

1. Greetings from the Chairman of the Executive Committee	1
2. Outline of the Event	1
3. Conference Schedule	2
4. About Venue	4
5. Information for Participants	9
6. About Oral Presentations	11
7. About Poster Presentations	13
8. About Independent Research Presentations	13
9. Society Events for Participants	13
10. Public Events	17
11. Presentation Programs (In Japanese only)	21

[Members of of Conference Organizing Committee]

Chairman	Hideki SATO (Edogawa University)
Head of the Secretariat	Kazuhiko NAKAMURA (University of Tokyo)
	Sachiko KAWAMURA (Tokyo University of Agriculture and Technology)
	Toshiyuki TOMITA (Kaichi International University)
	Yuko MUKAINAKANO (Japan Environmental Management Association for Industry)
	Koji HAYASHI (Chiba Prefectural Museum)
	Hiroyuki TAKAHASHI (Chiba Zoological Park)
	Yuki YAMASHIMA (Kokugakuin University)
	Mami NAKAMURA (NPO Open Concierge)
	Shigeru OHKURA (Tokyo University of Agriculture and Technology)
	Keita OTSUKA (Forestry and Forest Products Research Institute)
	Kazuyuki TAMURA (Naruto University of Education)

1. Greetings from the Chairman of the Executive Committee

The 35th Annual Meeting (Chiba) Executive Committee Chair

Hideki SATO

We sincerely appreciate your participation in the 35th Annual Conference of the Japanese Society for Environmental Education (JSfEE) in Chiba, Japan. As chair of the Executive Committee of this conference, it is my great honor to welcome you all to Edogawa University in Nagareyama City, Japan. The theme of this year's conference is "Flexible Environmental Education woven by community development." This year's theme seeks to explore new forms of Environmental Education that are closely related to our daily lives, and aims to build a sustainable future with an emphasis on communal characteristics.

On January 1, 2024, an earthquake centered on the Noto Peninsula in Ishikawa Prefecture caused a tremendous disaster. We would like to express our heartfelt sympathy to the victims of the Noto Peninsula Earthquake. This conference will feature a symposium on disaster prevention, providing an opportunity for communities to think deeply about how they can prepare for, respond to, and work together against disasters. We also plan to hold workshops to learn about the role of rescue dogs in times of disaster, and hope to provide a valuable opportunity for visitors to experience and deepen their understanding of actual rescue activities.

In addition, at the Vision Meeting for the Future of Environmental Education, we will exchange opinions with experts and participants to explore the direction of Environmental Education for the next generation. We hope that this meeting will provide a forum for new perspectives and ideas.

In addition, there will be excursions to Tone Unga (Tone Canal) and Ichinoyanomori (Ichinoya Forest). These excursions allow visitors to learn about the history and ecology of the region while interacting directly with nature. The experience of these excursions, which emphasize the characteristics of Nagareyama City as a local community, will remind us of the importance of Environmental Education.

Finally, we sincerely hope that this conference will be a place of meaningful learning and exchange for everyone, and an opportunity to make new discoveries and gain inspiration. The Executive Committee will do its utmost to ensure the success of the conference, and we look forward to serving you.

We look forward to seeing you all at Edogawa University. We hope you will have a meaningful time at the conference.

2. Outline of the Event

- **Period:** August 29 (Thursday)—September 1 (Sunday), 2024
- **Venue:** Edogawa University, Komagi Campus, Online (Zoom)

Ichinoyanomori (Aug 30, Excursion)

Toneunga Koryuukan (Aug 30, Excursion)

- **Host:** The Japanese Society for Environmental Education (The 35th Conference Executive Committee)
- **Support:** Ministry of the Environment; Ministry of Education, Culture, Sports, Science and Technology ; Ministry of Agriculture, Forestry and Fisheries; Ministry of Land, Infrastructure, Transport and Tourism; City of Nagareyama; Nagareyama City Board of Education; Weed Science Society of Japan
- Webpage for the 35th Annual Meeting of the Japanese Society for Environmental Education:
<https://www.jsfee.jp/members/meeting/113/601> (In Japanese)

3. Conference Schedule

	9 am	10 am	11 am	Noon	1 pm	2 pm	3 pm	4 pm	5 pm	6 pm	7 pm	8 pm	9 pm
Aug 29 (Thurs) Zoom (meetings)		Oral Presentations (Online)		Independent Research Projects (Online)			Oral Presentations (Online)						
Aug 30 (Fri) @ Edogawa Univ. Excursions		Excursion 1 (Ichinoyanomori)				Special Event (Evacuation with companion animals)	General Meeting of Members	Gathering for Young Member	Society Event(s) (Vision Meeting For the Future)				
Aug 31 (Sat) @ Edogawa Univ.	Regist- ration	Oral Presentations		Lunch Break	Public Symposium (Community Development)		Public Symposium (35 th Anniversary of the Society)	Roundtable Session			Reception		
		Poster presentations (core time: Noon—1 pm)											
		Environmental Education Messe											
Sep 1 (Sun) @ Edogawa Univ.	Regist- ration	Oral Presentations				Research Projects		Independent Research Projects					
		Oral Presentations (Eng)		Int'l Exchange									
		Poster Presentations											
		Encouragement Award Judging											
		Environmental Education Messe											

* Special Event (August 30), Public Symposiums, and Environmental Education Messe are open to everyone regardless of whether or not you have paid the conference registration fee.

<Conference Details>

August 29 (Thursday) @ Online (Zoom)

Oral Presentations 10:00—11:15 am & 2:30~4:45 pm
 Independent Research Projects 12:00—2:00 pm

August 30 (Friday) @ Ichinoyanomori, Toneunga Kouryuukan, & Edogawa University Komagi Campus

Excursion 1 9:00—11:00 am (Ichinoyanomori)
 Excursion 2 10:00 am—Noon (Toneunga Koryuukan)
 Special Event 2:00—3:00 pm (Edogawa University Komagi Campus)
 “Considering evacuation with companion animals in the event of disaster” (**No registration fee to join**)
 General meeting 3:00—5:00 pm (Edogawa University Komagi Campus)
 Gathering of young members 5:00—6:00 pm (Edogawa University Komagi Campus)
 Society Event 6:00—8:00 pm (Edogawa University Komagi Campus)
 Workshop to discuss about “Vison Meeting for the Future”

August 31 (Saturday) @ Edogawa University Komagi Campus

Registration	8:00 am (Building E, 1 st floor)
Oral Presentations	9:00 am—Noon
Poster Presentations	9:00—1:00 pm (Core time: Noon—1:00 pm)
Society Event	1:30—3:00 pm
Environmental Messe	9:00 am—3:30 pm (No registration fee to join)
Public Symposium 1	1:00—2:45 pm (No registration fee to join)

Theme: “Flexible Environmental Education woven by community development”

Speakers: Ms. Terumi YAGICHI (Nagareyama Disaster Prevention Community Development Project)

Mr. Hiroshi KIMURA (Musashino City)

Ms. Noriko HATA (Tsuru University)

Public Symposium 2	3:15 pm—5:00 pm (No registration fee to join)
--------------------	--

Theme: “What has been explored through the idea of ‘Environmental Education’?: An attempt to create a map of the world of exploration in Environmental Education”

Speakers: Prof. Toshihiko ANDO (Saitama University)

Mr. Tadashi KAWASHIMA (Kawashima Tadashi Office,

Former Executive Director of Japan Environmental Education Forum)

Mr. Toru OHMORI (Hokkaido University of Education (former))

Mr. Eiichiro HARAOKO (Tokyo Gakugei University)

Roundtable Session	5:00 pm—6:00 pm
--------------------	-----------------

Reception	6:30 pm—8:30 pm
-----------	-----------------

September 1 (Sunday) @ Edogawa University Komagi Campus (English Session & International Exchange

Meeting are held in-face and online)

Registration	8:00 am (Building E, 1 st floor)
Oral Presentations	9:00 am—Noon
Encouragement Award Judging	9:00—10:00 am
English Presentation Session	9:00—11:00 am
Poster Presentations	9:00—1:00 pm
Environmental Messe	9:00 am—3:30 pm (No registration fee to join)
International Exchange Meeting	11:00 am—1:00 pm
Research Projects	1:00—3:00 pm
Independent Research Projects	3:30—5:30 pm

4. About Venue

<Access to Edogawa University Komagi Campus>

Address: 474 Komagi, Nagareyama, Chiba-Prefecture, 270-0198

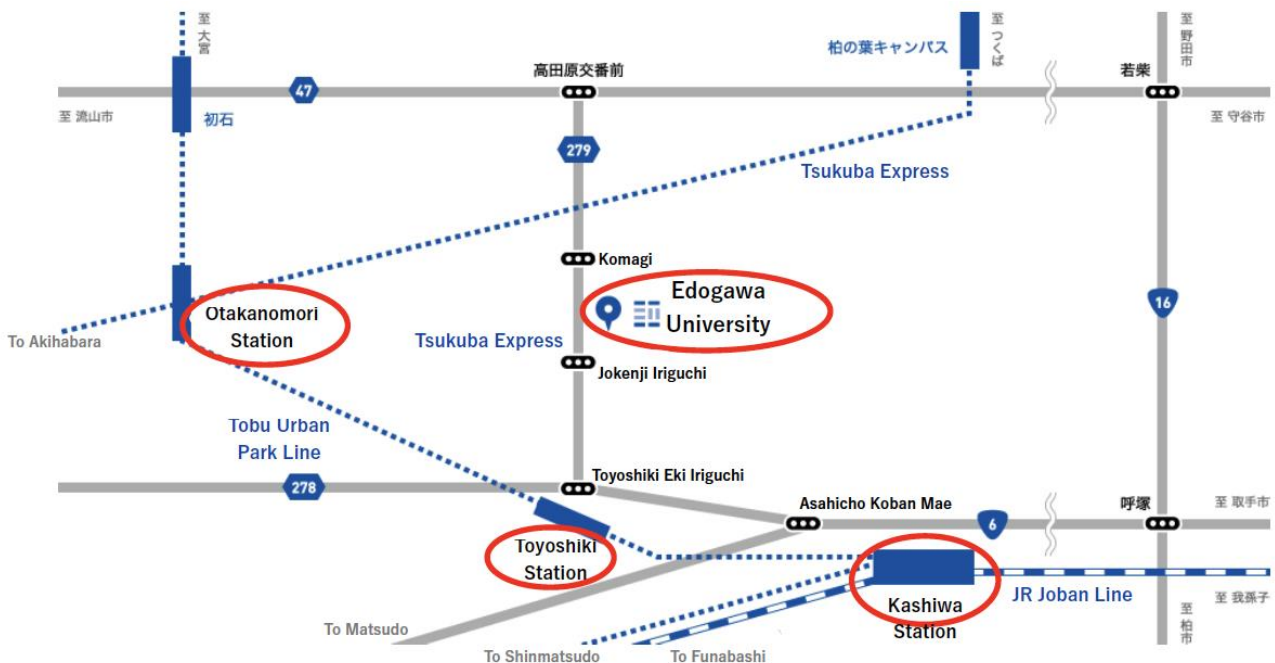
※ Map, Pictures, Texts are based on the webpage of Edogawa University.

If you plan to come to Edogawa University Komagi Campus, we kindly ask you to use public transportation. Prior permission to use the parking lot is required as parking spaces are limited. If you need to park, please contact the secretariat in advance. Secretariat Contact: chiba2024@jsfee.jp

(1) By train

<Guide from the nearest station to the University>

- The nearest stations to Edogawa University Komagi Campus are "Nagareyama Otakanomori Station" on the Tsukuba Express and Tobu Urban Park Line or "Toyoshiki Station" on the Tobu Urban Park Line.
- From "Nagareyama Otakanomori Station" of Tsukuba Express and Tobu Urban Park Line, it takes about 6 minutes by school bus.
- Approximately 12 minutes on foot from Toyoshiki Station on the Tobu Urban Park Line
 - There is no school bus service from Toyoshiki Station.
- If coming from JR Kashiwa Station, take the Tobu Bus (No. 2 bus stop) from the West Exit of JR Kashiwa Station, and get off at the Umebayashi Bus Stop (5 minutes).



(2) School bus schedule from Nagareyama Otakanomori Station

The school bus schedule and timetable are posted at Transportation Access.

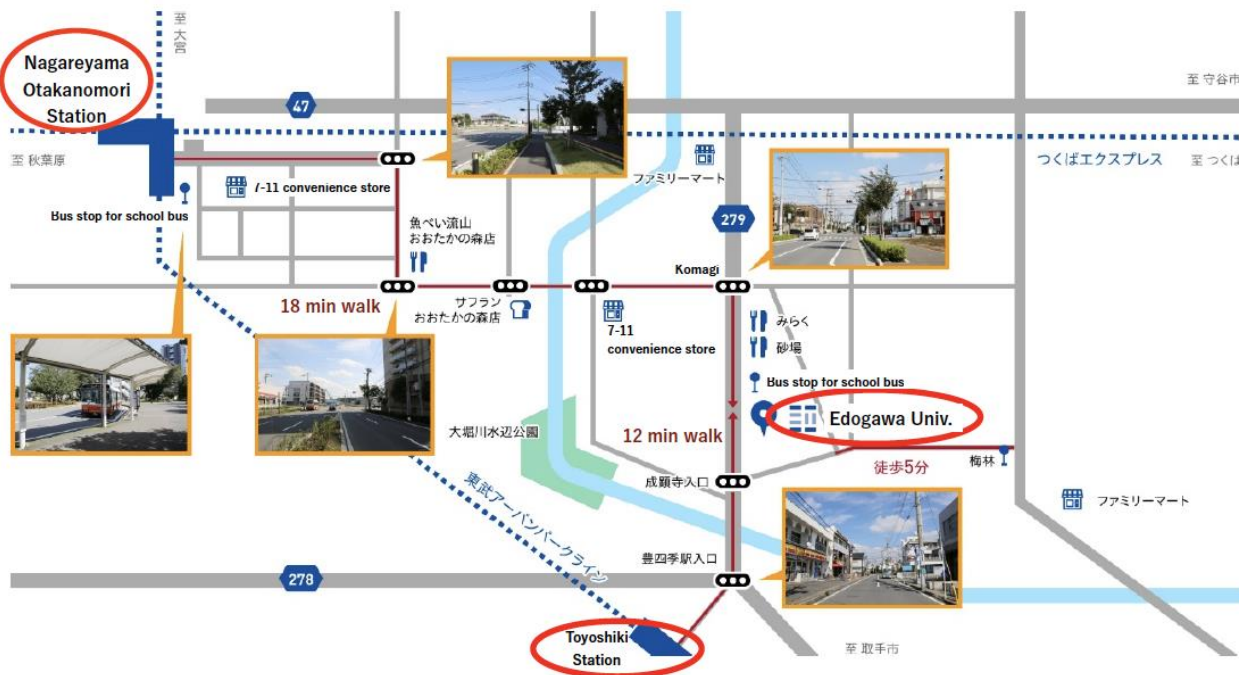
School Bus: <https://www.edogawa-u.ac.jp/koutuu/>

- The Edogawa University school bus runs directly between the main gate of the university and Nagareyama Otakanomori Station (there is no intermediate stop between the university and the station).
- The bus stop at Nagareyama Otakanomori Station is located in the line of local buses at the east exit.

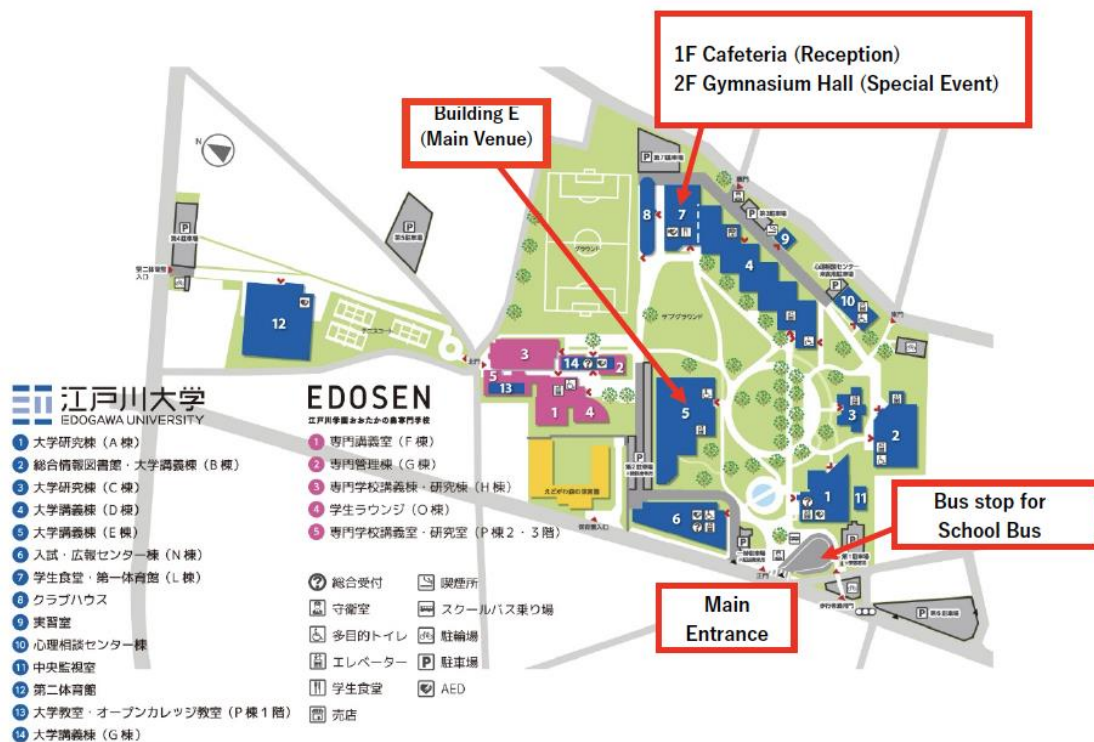
Map around Nagareyama Otakanomori Station



(3) Walking map from the nearest station to Edogawa University



<Campus Map for Edogawa Univ. Komagi Campus>



<Rooms for Presentation (August 30—September1)>

Edogawa University Komagi Campus: Building E and Building L

Rooms:

Building E

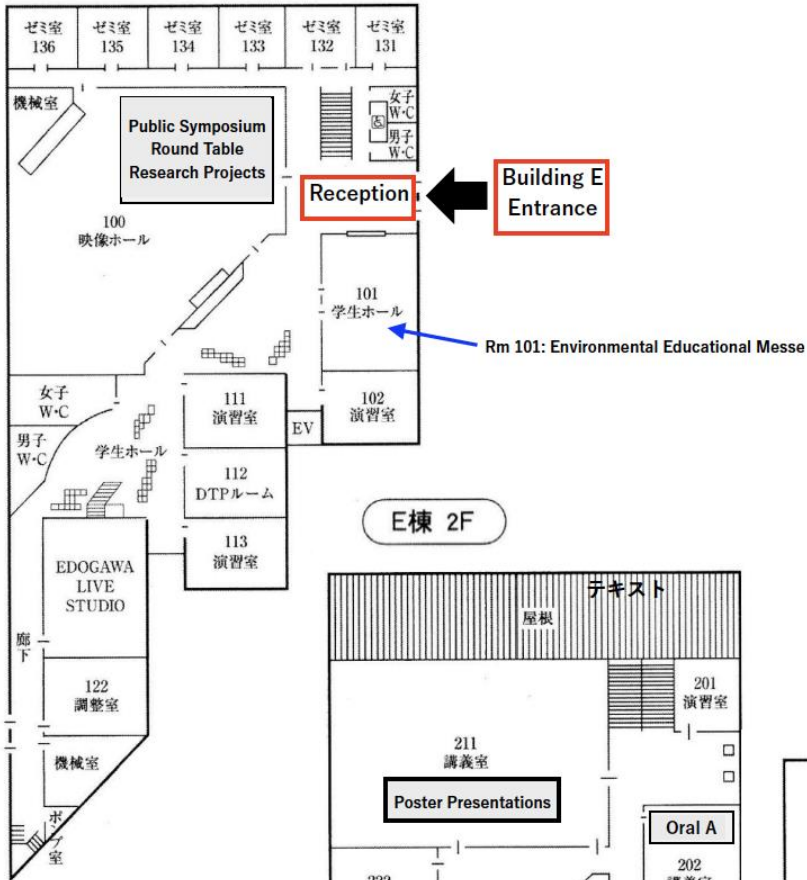
Room 100 (Video Hall)	Public Symposium, Round Table & Research Project Presentation
Room 101 (Student Hall)	Environmental Education Messe
Room 102 (Seminar Room)	Society Event (Vision Meeting for Future)
Room 202 (Lecture Room)	Oral Presentation A, Independent Research Project (1) & General Meeting
Room 211 (Lecture Room)	Poster Presentation
Room 212 (Lecture Room)	Oral Presentation B & Independent Research Project (2)
Room 222 (Lecture Room)	Gathering for young members & Independent Research Project (3)
Room 223 (Lecture Room)	Oral Presentation C & Independent Research Project (4)
Room 302 (Lecture Room)	Oral Presentation D & Independent Research Project (5)
Room 312 (Lecture Room)	Oral Presentation E & English Presentation Session, International Exchange Meeting & Independent Research Project (6)
Room 321 (Lecture Room)	Independent Research Project (7)
Room 322 (Lecture Room)	Oral Presentation F & Encouragement Award Judging & Independent Research Project (8)

Rooms 203, 213, 303, and 313 are open as resting room for participants.

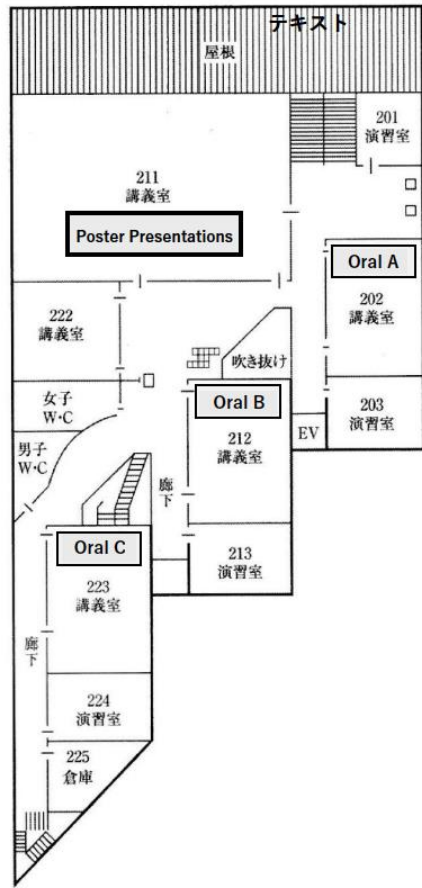
Building L

Gymnasium	Special Event: “Considering evacuation with companion animals in the event of disaster”
Cafeteria	Reception

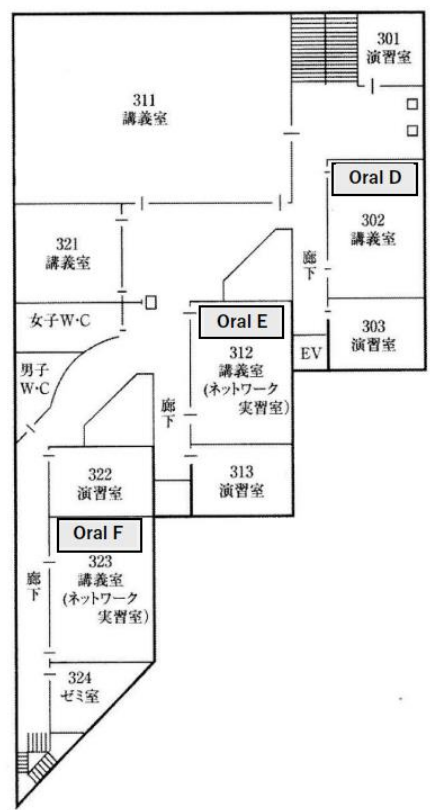
● Building E



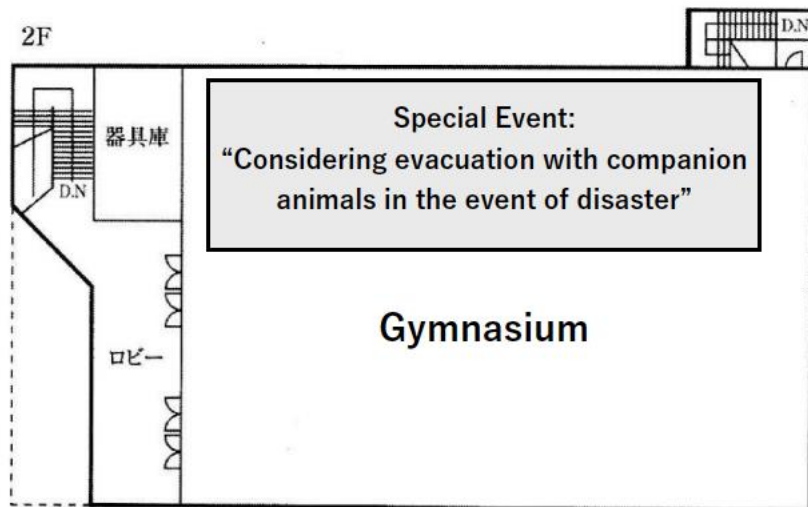
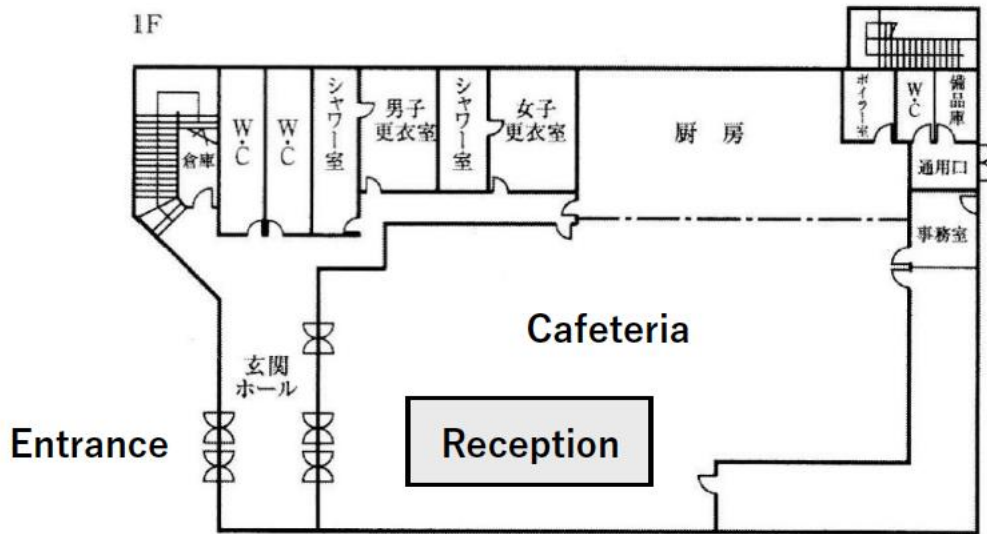
E棟 2F



E棟 3F



● Building L



5. Information for Participants

Face-to-face Participation

● In General

- The conference registration desk will be located on the 1st floor of the Edgawa University Komagi Campus Building E from August 31 (Sat) to September 1 (Sun). All participants must register here.
- You will receive your name tag at the registration desk. Please be sure to wear it at the venue.
- No one will be allowed to enter or leave any buildings or classrooms other than the venue during the conference.
- Smoking is not permitted at the venue. Please note that there is no smoking area.

● Wi-Fi access at the venue

- Registered participants will be given a guest wireless LAN account ID and password for on-campus Wi-Fi access at the registration desk on the day of the event. However, we cannot guarantee the Internet connection speed.

● Accommodation Information

- Please make your own accommodation arrangements. The Executive Committee will not make reservations or arrange for accommodation. Please refer to the access information (p. 4-7) and secure your accommodation as soon as possible.

● About meals

- During the conference, University cafeteria is closed.
- Please use the resting rooms (203, 213, 303, 313) in Building E, etc. for meals.
- Please take your garbage home with you.

● Others

- There is no cloakroom. Please carry your valuables with you.

Online Participation

- ZOOM online conferencing system will be used for oral presentations (online). Please connect to the Internet from your computer, tablet, or smartphone to participate.
- Please check your computer operation, internet connection, video/audio, etc. in advance. (You can test your login at the link on the right: <https://zoom.us/test>)
- Please note that you will be responsible for any additional costs incurred for online participation, such as communication fees.
- **Meeting ID and Passcode will be sent directly to participants on August 26 (a day before the online presentation).**
- When entering a meeting room, please set the name displayed on the ZOOM as "Name (Affiliation)".
- Those who participate online must follow the presentation and auditing procedures specified by the Executive Committee. The Japanese Society for Environmental Education will not be held responsible for any problems that may occur when making a presentation at the online conference.
- Please do not record, tape-record, or screenshot video, audio, text logs, etc. during the presentation without the presenter's permission. Disclosure of such information to third parties through posting on social networking sites is prohibited.

- Please follow the instructions of the chairperson of the session regarding the use of the chat function and questions during the presentation.
- Due to the limited number of connections, do not use multiple devices for simultaneous connections.
- The chairperson and support staff may, at their discretion, forcibly turn off participants' microphones, cameras, screen sharing, etc., if they are found to be interfering with the smooth progress of the event. Please understand and accept this.

6. About Oral Presentations

Face-to-face Presentation

(Preparation)

- Presenters are requested to bring their own PCs and tablets. No PCs will be available for lending at the venue. The projector will be connected to an HDMI terminal, so please prepare an environment where you can use the HDMI terminal.
- The presenter is responsible for the operation of his/her PC.
- Please bring your PowerPoint slides on a USB memory stick just in case. Please check your USB memory stick for viruses by yourself.
- Presenters are requested to check the HDMI connection during the session changeover time.

(Presenters)

- Presenters are requested to wait at the front of the room for the next presentation.
- Presenters are required to state the title of the presentation and the name of the presenter at the beginning.
- The presenters are requested to inform us of whether or not they are allowed to take photographs of the slides and other materials of their oral presentations prior to their presentations.
- The presentation time will be 15 minutes (12 minutes for presentation and 3 minutes for questions).
- The cues during the presentation are as follows.

First Ring:	10 min
Second Ring:	12 min (End of presentation time. Please stop your presentation.)
Third Ring:	15 min (End of Q&A session. Please switch to the next presenter.)

- Presenters are requested to remain in the room until the end of the general discussion of their respective session.

(Session Chairperson)

- The chairperson is responsible for the entire session. Please take responsibility for the progress of the session from the presentation to the general discussion.
- Please be punctual when proceeding.
- Please have the inquirer state his/her name and affiliation at the outset.
- Please be careful not to bias the discussion toward any particular presenter or speaker.

Online Presentations

(Preparation)

- A ZOOM meeting ID will be assigned for each session. Please confirm and enter the Meeting ID and passcode that will be sent to participants.
- When entering the meeting room, please enter the name displayed on ZOOM in the order of "[Presenter] Name (Affiliation)". Example: [Presenter] Edogawa Rampo (Edogawa University)
- Please make sure to connect in a telecommunication environment with sufficient connection speed.
- If you have a headset or earphones with a microphone, we recommend using them.
- You can test login at the following link. Please check the audio, etc. beforehand.
 - <https://zoom.us/test>

(Presenters)

- Oral presentations will be given using Zoom.
- Presenters must enter the meeting room at least 5 minutes prior to the start of their session.
- The presentation time will be 15 minutes (12 minutes for presentation and 3 minutes for questions).
- The cues during the presentation are as follows.

First Ring:	10 min
Second Ring:	12 min (End of presentation time. Please stop your presentation.)
Third Ring:	15 min (End of Q&A session. Please turn off your microphone and camera.)

- Presenters should remain in the meeting room until the end of the general discussion of their session.

(Audiences)

- When entering the meeting room, please enter your name as it appears on ZOOM in the order of "Name (Affiliation)".
- Please turn off your camera and microphone when listening to the presentations.
- Please follow the chairperson's instructions regarding the use of the chat function.
- Click on the reaction button (raise your hand) when you want to ask a question. After being nominated by the chairperson, turn on the camera and microphone and ask your question.
- Please cooperate for the smooth operation.

(Session Chairperson)

- The chairperson is responsible for the entire session. Please take responsibility for the progress of the session from the presentation to the general discussion.
- Before starting a session, please state whether the chat function is available or not.
- Please be punctual when proceeding.
- Please have the inquirer state his/her name and affiliation at the outset.
- Please be careful not to bias the discussion toward any particular presenter or speaker.

7. About Poster Presentations

(Preparation)

- Presenters are requested to post their posters in the designated location by 9:00 a.m. on Saturday, August 31.
- Poster space is limited to one A0-size sheet per poster.
 - (Poster can be a size up to H:1189mm x W:841mm)
- The conference Executive Committee will provide studs and tape for mounting posters. Please do not use tape you have prepared yourself.
- If you do not wish to have your poster photographed, please post a notice by yourself.

(Presenters)

- Presenters are requested to stand in front of their posters during the core time (12:00~13:00) on Saturday, August 31 for the Q&A session.
- Presenters do not need to be present at all times except for the core time.

(Clean-up)

- Please remove your posters at 12:30 p.m. on Sunday, September 1, to complete the clean-up.
- Any posters left on display after the removal time will be disposed of by the Executive Committee. Please note that we will not keep them.

8. About Independent Research Presentations

- The organizer is responsible for setting up and running the venue for the face-to-face meeting, and must return the venue to its original state after the event is over.
- The representative and members of the team are responsible for facilitating the event.
- Please keep strictly to the closing time.

9. Society Events for Participants

● Excursion

- ※ **You must register in advance to join an excursion.** For more information, please visit the Annual Conference website. (<https://www.jsfee.jp/members/meeting/113/601> in Japanese only)

(1) Walk in Ichinoyanomori (Ichinoya Forest) by NPO Satoyama

Date & Time: August 30 (Friday) 9:00—11:00 am

Venue: Ootakanomori Center & Ichinoyanomori (Ichinoya forest)

Details:

The Ichinoya Forest is located about a 10-minute walk from Nagareyama Ootakanomori Station. This forest was nearly destroyed by housing development following the opening of the Tsukuba Express, but the discovery of goshawk habitat led to the preservation of the forest as a park, half of which (25 hectares) was maintained as woodland through the activities of citizens.

Schedule:

9:00—9:30 am: Talk about Ichinoya Forest and NPO Satoyama's activities

9:30—10:45 am: Guided tour of Ichinoya Forest

Maximum Participants: 20 people

Fee: Free

* Participants are requested to come directly to the site (Otakanomori Center) and disperse at the site.

* Meeting place/venue: Otakanomori Center (2-13-1 Otakanomori Nishi, Nagareyama City)

A little over 10-minute walk from the west exit of Nagareyama Otakanomori Station.

* In case of rain, the event will be cancelled.

NPO Satoyama: <https://www.nposatoyama.com/>

(2) Nature of Toneunga (Tone Canal) by Toneunga Koryuukan

Date & time: August 30 (Friday), 10:00 am—Noon

Venue: Toneunga Koryuukan

Theme: Nature of Toneunga

Details:

The Tone Canal is an 8.5 km long canal connecting the Edo and Tone Rivers. Opened in 1890, the Tone Canal was Japan's first Western-style canal, constructed using the most advanced civil engineering technology of the time. At its peak, 40,000 boats passed through the canal every year, and it was a tourist attraction known for its cherry blossoms. However, the decline of water transportation due to the development of railroads, as well as a major flood in 1941, ended the canal's role in about 50 years. Over the years, the Tone Canal, which was built taking advantage of the natural topography of the valleys and other natural features, has gradually regained its original natural appearance and is now a regional resource with the characteristics of a satoyama ecosystem where diverse living creatures coexist, while retaining the landscape of a Western-style canal.

Schedule:

10:00—10:05 am: Explanation about activities

10:05—10:45 am: Explanation about the history of the Tone Canal (Canal Waterfront Park, Toneunga Koryuukan)

10:45—11:10 am: Tour of Tone Canal flooding and river office

11:15—Noon: About the Ecosystem of Tone Canal

Maximum Participants: 20 people

Fee: Free

* Participants are requested to come directly to the Toneunga Koryuukan and disperse at the site.

15 minute walk from Toneunga Koryuukan to the nearest station, Unga Station (Tobu Noda Line)

* The event will be held even if it rains.

Toneunga Koryuukan: <https://www.tone-unga.com/>

● **Gathering for Young Members**

Date & Time: August 30 (Friday), 5:00—6:00 pm

Venue: Building E, 2nd Floor, Room 222 (Edogawa University Komagi Campus)

Details:

As a future-oriented organization, the Society has always valued the opportunity to gather young members who will lead the next generation. The conference will also provide an opportunity for students and new members to gather, introduce their research, and network. Young and mid-career members who are involved in the development of the Society's "Vision for the Future" will be present to share information on the recent status of the Society and to receive your questions and requests.

No advance registration is required, and the event will proceed in a way that makes it easy to join in the middle of the meeting, so please feel free to show up and join us. We look forward to making new friends again this year and to making this society an even more rewarding place to be!

● **Society Event: “Workshop to discuss about ‘Vision of the future’”**

Date & Time: August 30 (Friday), 6:00—8:00 pm

Venue: Building E, 1st Floor, Room 102 (Edogawa University Komagi Campus)

Details:

In FY2023, a new "Future Vision Working Group (WG)" was established within the Society to intensively study the medium-term direction of the Japanese Society for Environmental Education (JSfEE) in the future. As one of the main activities of this project, we have been working on the "Vision for the Future," which is intended to present the general direction of the Society's role as an academic organization for the next 20 years, and the final version will be presented at the conference. On this occasion, we would like to invite young members who will be involved in the process of giving shape to the "Vision for the Future" to offer their opinions on the future management of the Society, and we would like to have a frank discussion.

On the day, Mr. Tadashi Kawashima (former president of the Tadashi Kawashima Office, Former Executive Director of Japan Environmental Education Forum) will first present a topic, followed by group work using "Entakun". We hope to have an enthusiastic, enjoyable, and dreamy discussion with those of you who are willing to be involved in the management of the conference for the next 20 years.

● **Roundtable Session for Members**

Date & Time: August 31 (Saturday), 5:00—6:00 pm

Venue: Building E, 1st Floor, Video Hall (Edogawa University Komagi Campus)

● **Reception**

Date & Time: August 31 (Saturday), 6:30 pm—8:30pm

Venue: Building L, 1st Floor, Student Cafeteria (Edogawa University Komagi Campus)

● English Report Presentations

Date & Time: September 1 (Sunday), 9:00 am—11:00 pm

Venue: Building E, 3rd Floor, Room 312 (Edogawa University Komagi Campus)

The conference will have an "English Reporting Session" during the oral presentations (9:00am—11:00 am) on September 1 (Sunday), which will be conducted entirely in English. The presentation format is the same as for oral presentations: oral presentation (face-to-face or online), Q&A, and general discussion.

We encourage not only participants who will be presenting in English, but also all other members to actively participate in the English Reporting Session. For details, please see below in the research presentation program.

For online participants, please check the Zoom ID and passcode sent to participants (Same ID and passcode as for August 29).

● International Exchange Meeting

Date & Time: September 1 (Sunday), 11:00 am—1:00 pm

Venue: Building E, 3rd Floor, Room 312 (Edogawa University Komagi Campus)

Theme: “The Past and Future of JSFEE's International Exchange”

Essentials: What is the Society's International Exchange Committee's involvement, achievements, and challenges?

Based on case studies

Target: Members interested in international exchange and international collaboration (both researchers and practitioners)

Topics: International joint research through the introduction of past activities, exchange projects, and interaction with International Exchange Committee Members

Languages: Japanese and English

● Research Projects (Research Committee Sponsored Events)

Date & Time: September 1 (Sunday), 1:00—5:00 pm

Venue: Building E, 1st Floor, Video Hall (Edogawa University Komagi Campus)

Details:

The five study groups established by the Society through FY2023 expired at the end of June 2024. In this session, each study group will report on their activities during this period, and there will also be time for questions, answers, and exchanges of opinions. The next study group is scheduled to be established during FY2024, and I will explain the current conceptual plan by the Research Committee. Although the main focus of this year's event will be for each study group to gather together to report and exchange opinions, some study groups have entered separately in the next time slot ("Independent Research Projects"). A report on the activities of the Study Groups will also be published in the Journal of the Society. Those interested in the activities of the study group are cordially invited to participate and read the report.

Program:

- Explanation of the purpose
- Activity reports (15 minutes each)
 - Study Group on "Education on SDGs"
 - Study Group on "Climate Change Education"
 - Study Group on Evaluation of "Environmental Education Programs"
 - Study Group on "Fukushima after the Nuclear Accident"
 - Study Group on "Pollution Education"
- Q&A Session
- About the next Study Groups

10. Public Events

● Special Event: "Considering evacuation with companion animals in the event of disaster"

Date & Time: August 30 (Friday), 2:00—3:00 pm

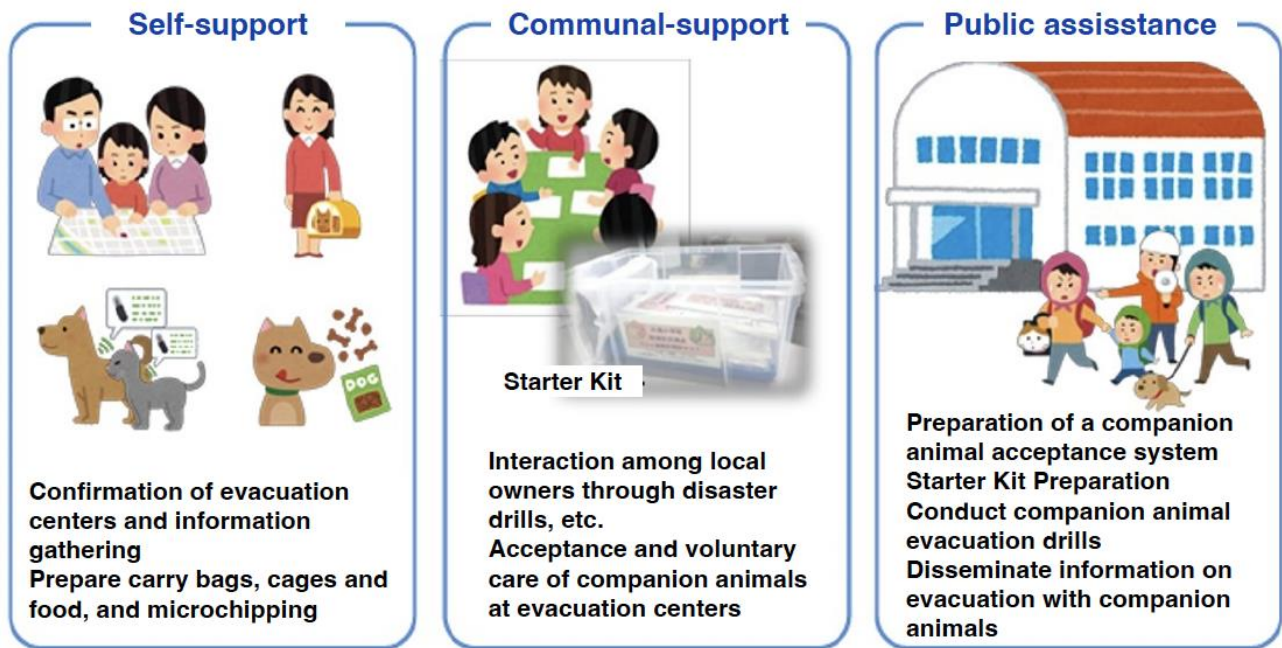
Venue: Building L, 2nd Floor, Gymnasium (Edogawa University Komagi Campus)

Evacuation with a companion animal means that an owner evacuates to a safe place with his/her pet animal in the event of a disaster. In past disasters, there have been cases where people have died along with their companion animals due to the disaster because their owners did not evacuate because they could not take their pets to evacuation centers. It is natural for owners to want to evacuate with their beloved pets, who are like family to them.

The purpose of evacuation with companion animals is to ensure the safety of people who own pets by creating a system that allows owners to evacuate with their pets without hesitation by accepting companion animals at evacuation centers close to them.

In this session, we will consider what owners and local governments can do to help. First, Professor Emeritus Hajime Watanabe of Tokyo University of Agriculture and Technology will talk about the significance of this activity. After that, Yuri Inoue (handler) will explain how Sachiko Tsurumi and Masami Kato, two handlers and six rescue dogs (volunteer dogs actually working in the disaster area) are trained on the assumption of a real case, and you will observe and experience how they are trained.

The Executive Committee has planned this event as a step toward building a sustainable society for people and animals. We hope that as many people as possible will participate in this event.



● Public Symposium

[Part 1]

Date & Time: August 31 (Saturday), 1:00—2:45 pm

Venue: Building E, 1st Floor, Video Hall (Edogawa University Komagi Campus)

Theme: “Flexible Environmental Education woven by community development”

Presenters:

MC: Mr. Hideki Sato (Edogawa University)

Speaker 1: Ms. Terumi YAGICHI (Nagareyama Disaster Prevention Community Development Project)

Speaker 2: Mr. Hiroshi KIMURA (Musashino City)

Commentator: Ms. Noriko HATA (Tsuru University)

Details:

The Noto Peninsula Earthquake that occurred on January 1, 2024 reminded us of the fact that our daily lives are always next to natural disasters. Major disasters can also disrupt schools and seem to cause a loss of learning opportunities. However, we believe that now is the time to shed light not only on planned learning opportunities but also on informal learning in everyday life, including in relation to disasters, in order to realize a "flexible" Environmental Education that will not break under any circumstances.

Nagareyama City, the host city of this conference, has been in the limelight for its urban development centering on the child-rearing generation, as evidenced by the fact that its population growth rate has been the highest in Japan for six consecutive years. How are these communities preparing for disasters? Also, how have residents dealt with the problems of waste and garbage, which are daily issues, especially in urban areas where population is concentrated? All of these can be seen as important issues for community development, as well as important and valuable informal learning opportunities for Environmental Education.

In this symposium, we would like to explore new forms of supple Environmental Education that are interwoven with the multilayered issues involved in urban development, and to develop discussions aimed at building a sustainable future with an emphasis on communal characteristics.

[Part 2]

Date & Time: August 31 (Saturday), 3:15—5:00 pm

Venue: Building E, 1st Floor, Video Hall (Edogawa University Komagi Campus)

Theme: “What has been explored through the idea of ‘Environmental Education’?: An attempt to create a map of the world of exploration in Environmental Education”

Presenters:

MC: Prof. Toshihiko ANDO (Saitama University)

Speaker 1: Mr. Tadashi KAWASHIMA (Kawashima Tadashi Office,
Former Executive Director of Japan Environmental Education Forum)

Speaker 2: Mr. Toru OHMORI (Hokkaido University of Education (former))

Commentator: Mr. Eiichiro HARAOKO (Tokyo Gakugei University)

Details:

What kind of "inquiry" have those involved in Environmental Education conducted, what kind of "knowledge" have they produced, and what kind of "world" have they opened up by using that "knowledge"?

As an approach to this question, we will focus on each person who has been involved in Environmental Education and elucidate this question in his or her own way. By continuing such attempts and accumulating answers to these questions, and by considering the answers in a cross-sectional and comprehensive manner, a more universal "map of the world of inquiry in Environmental Education" may eventually emerge that goes beyond a single person involved in Environmental Education.

With this "map", we would like to explore the "world of inquiry of environmental education" and create a "map" that will allow each person involved in Environmental Education to draw his or her own "map of the world of inquiry".

It is with these expectations that we embark on this endeavor.

As a start, we would like to welcome Mr. Tadashi Kawashima and Mr. Toru Omori at this year's conference symposium to share their "world of exploration in Environmental Education" and have a free discussion to explore that world with the symposium participants.

This effort will be continued as one of the research projects of the Japanese Society for Environmental Education.

Through the above work, we hope that each of the participants will draw a map, and that the result of the work will be the first step to trace, construct, and emerge a "history of Environmental Education Research".

** Since there will not be enough time for discussion at the symposium, we are planning to conduct an independent research project "Toward Mapping the World of Inquiry in Environmental Education (Continued)" at the conference of the Japanese Society of Environmental Education.*

● Environmental Education Messe (Exhibition Booth)

As a program open to the public (free of charge), we will introduce the activities of various organizations related to Environmental Education, and exhibit and sell environment-related books, products, and other items. Please come by and visit as a place for communication between the organizations and the conference participants and conference members.

Date & Time: August 31 (Saturday), 9:00 am—3:30pm & September 1 (Saturday), 9:00 am—3:30 pm

Venue: Building E, 1st Floor

Exhibiting organizations (in Japanese alphabetical order): 12 organizations

- ・ ESD 活動支援センター (The ESD Resource Center of Japan)
- ・ かもがわ出版・子ども白書編集委員会
(Kamogawa Publisher, Kodomo Hakusho Editorial Committee)
- ・ (公財) キープ協会 (Kiyosato Educational Experiment Project)
- ・ (公財) 京都市環境保全活動推進協会 (Kyoto Environmental Activities Association)
- ・ 包み屋 (Kurumiya)
- ・ (一社) 産業環境管理協会 資源・リサイクル促進センター
(Japan Environmental Management Association for Industry,)
- ・ NPO 法人 新宿環境活動ネット (NPO Shinjyuku Environmental Activity Network)
- ・ (一社) 日本雑草学会 (Weed Science Society of Japan)
- ・ (公社) 日本環境教育フォーラム (Japan Environmental Education Forum)
- ・ (公財) 日本生態系協会 (Ecosystem Conservation Society-Japan)
- ・ 人言洞 (同) (NingenDo)
- ・ (一社) 農山漁村文化協会 (Nousan Gyoson Bunka Kyoukai)
- ・ (一社) プラスチック循環利用協会 (Plastic Waste Management Institute)

11. 発表プログラム

●口頭発表（オンライン）

※登壇者（筆頭者）として登録された1名のみ氏名を掲載しています。

8月29日（木）：10:00～11:15

会場	10:00～	10:15～	10:30～
オンライン実践報告	[29G01] 多田満 生成AI導入による社会対話「環境カフェ」－「海洋プラスチック問題を考える」をテーマに－	[29G02] 遠藤晃 ユネスコ BR におけるカモシカ ESD プログラムの実践研究 -カモシカボードゲームの開発と実践-	[29G03] 佐藤秀樹 Bangladesh・ジョジョール県における零細農村生産者のエンパワーメントと生計向上への挑戦

会場	10:45～	11:00～
オンライン実践報告	[29G04] 千葉駿 鳥海高原の循環型農業を教材とした持続可能な教育の事例	[29G05] 諸頭純 高校生による麦芽かす有効利用法の模索を通じた地域コミュニティ創出の実践報告

8月29日（木）：14:30～16:45

会場	14:30～	14:45～	15:00～	15:15～
オンライン研究発表	[29G06] 鈴木隆弘 高等学校公民科における ESD の現在－教科書の分析を中心として－	[29G07] 本田裕子 コウノトリが野外繁殖をしている自治体の教育部局の対応について	[29G08] 本庄眞 長年にわたる奈良県におけるカモシカ調査から見えてきたこと	[29G09] 溝田浩二 環境教育分野で多様化・高度化する昆虫活用ニーズの現状と課題

会場	15:30～	15:45～	16:00～
オンライン研究発表	[29G10] 今村莉子 自然体験学習を行う青少年教育団体（NPO、NGO）において、学生ボランティアの活動継続参加を可能にする要因の分析	[29G11] 渡部聡子 ボランティア活動者による政治参加の実態：ドイツにおける請願の事例から	[29G12] 後藤みな ドイツにおける森林教育の現代的アプローチ－その視点と射程－

会場	16:15～	16:30～	16:45～
オンライン研究発表	[29G13] 飯塚宜子 存在論的転回と環境教育－ノン・ヒューマンと人間の連続性	[29G14] 酒井佑輔 日本の環境教育におけるパウロ・フレイレ－花崎皋平の歩みと教育実践から－	[29G15] 谷萩真樹 有機米の学校給食使用における教育的意義－「教科書対応の授業アイデア表」の作成と検証－

●口頭発表（対面）

※登壇者（筆頭者）として登録された1名のみ氏名を掲載しています。

8月31日（土）：9:00～9:55

会場	テーマ	9:00～	9:15～	9:30～	9:45～
A 会場 202 講義室	環境教育を考 える (研究)	[31A01] 原子栄一郎 私は「環境教育」という アイデアを通して何を 探究してきたのか：私 の環境教育の探究世界 の地図づくりの試み	[31A02] 大森和樹 デューイの思想から考 える動物園・水族館の 教育 — 『学校と社会』 を中心に—	[31A03] 若林身歌 ドイツにおける環境教 育学の視座に関する研 究 — 「森の教育学 (Waldpädagogik)」と 環境教育に着目して	総合 討論
B 会場 212 講義室	学校 教育 (研究)	[31B01] 井上真理子 学校教育で森林づくり 活動を行う実施体制の 事例分析	[31B02] 中澤朋代 学校におけるESD環境 教育の展開モデルとコ ーディネート	[31B03] 吉村親 小学校の総合的な学習 の時間における農業学 習の可能性	総合 討論
C 会場 223 講義室	プログ ラム開 発 (研究)	[31C01] 陣内雄次 持続可能なまちづくり のための学びと学習プ ログラムに関する一考 察	[31C02] 高橋正弘 希少野生生物保護を題 材とした対馬市におけ る環境教育の方向性の 析出バリエーションに ついて	[31C03] 山崎博史 地域の地質特性を活か した環境教育プログラ ムの構想：環境教育に おける長時間スケール の視点について	総合 討論
D 会場 302 講義室	教育 実践 (実践)	[31D01] 浜泰一 大学フィールドワーク 授業における学習内容 と成果	[31D02] 竹本裕之 年少児と養育者を対象 とした「嗅覚迷路ゲー ム」の実践：描画を用い た教育効果の分析	[31D03] 畑田彩 環境教育と鑑賞教育の 融合 — 国連子ども環 境ポスターを活用した 鑑賞教育 次の展開に 向けて—	総合 討論
E 会場 312 講義室	自然 体験 (実践)	[31E01] 大谷陵朔 草木染を用いた環境教 育プログラムの開発 — 実施方法の検証およ び改善、煮汁の比色定 量—	[31E02] 渡邊司 持続可能な未来を考え る里山体験学習	[31E03] 大和淳 新潟にある水族館が実 施する「田んぼ体験プ ログラム」での学びに ついて	総合 討論

8月31日(土) : 10:00~10:55

会場	テーマ	10:00~	10:15~	10:30~	10:45~
A会場 202 講義室	環境教育の再考 (研究)	[31A04] 新田和宏 「失われた30年」における日本環境教育－日本環境教育史研究Ⅷ－	[31A05] 野田恵 環境教育の今日的課題－国連子どもの権利委員会一般的意見(ジェネラルコメント)26号をから読み取れること	[31A06] 東方沙由理 環境教育と批判的思考	総合 討論
B会場 212 講義室	学校種間の接続 (研究)	[31B04] 井村礼恵 幼小接続期の教育課程における「食環境教育」の可能性	[31B05] 加藤美由紀 小中接続の視点から見た生物多様性保全教育	[31B06] 松井晋作 高大接続の観点から見た環境教育	総合 討論
C会場 223 講義室	環境学習・環境活動の影響 (研究)	[31C04] 木俣美樹男 環境学習による心の構造と機能の文化的進化	[31C05] 赤石澤大貴 自然保全活動従事者の参加要因と継続要因～佐渡ヶ島を事例として～	[31C06] 河野晋也 環境との相互作用がもたらす学習者の変容	総合 討論
D会場 302 講義室	教材開発・指導法 (実践)	[31D04] 榎原智美 SDGs 関連授業の実践をふまえた授業形態から小学生の指導法を考える	[31D05] 内田竜嗣 環境学習マンガウェブサイトの運用と課題	[31D06] 田開寛太郎 湿地における環境教育VR オープン教材の開発と教育実践	総合 討論
E会場 312 講義室	自然保育 (実践)	[31E04] 増田直広 保育者養成校における地域イベント出展の取り組みと意義	[31E05] 河村幸子 主体性を育てる自然保育の展望と課題	[31E06] 富田宏 保育科における郷土資料に記述された子どもの自然遊びの実践と生きた文化として地域へ還す試み	総合 討論

8月31日(土)：11:00～11:55

会場	テーマ	11:00～	11:15～	11:30～	11:45～
A 会場 202 講義室	地域の 持続可 能性 (研究)	[31A07] 田中純一 住み続けることを支え るもの：能登半島地震 被災集落住民の暮らし から	[31A08] 小栗有子 「土着知」を世代間継 承するための方法開発 とその実践 ー与論島 民との共同実践・研究 の試みを中心にー	[31A09] 元木理寿 人口減少地域でのフィ ールドワークを通じた ESD 展開の可能性 ー鹿児島県錦江町を事 例としてー	総合 討論
B 会場 212 講義室	理科・ 生物分 野と環 境教育 (研究)	[31B07] 羽生一予 小学校 5 年生における 土壌学習前後の土のイ メージの変化	[31B08] 尾上茉莉子 採卵鶏のアニマルウェ ルフェアに関する意思 決定・合意形成を支援 する理科教材の構想	総合討論	
C 会場 223 講義室	大学 生・大 学院生 の認識 (研究)	[31C07] 田村和之 教員を目指す大学院生 の環境教育/ESD につ いての認識：鳴門教育 大学大学院における調 査	[31C08] 後藤忍 放射線被ばく等に関す る大学生の知識と認識 についての調査：ALPS 処理水海洋放出後のア ンケート	[31C09] 大塚啓太 自然への愛着感は大学 進学後の都市/地方環 境によって変化する か？	総合 討論
D 会場 302 講義室	地域連 携・地 域協働 (研究)	[31D07] 山本豪 地域食堂を運営する地 域組織の在り方に関す る研究 -鳥取県鳥取市 河原町『ふれあい食堂』 を事例に-	[31D08] 斉藤雅洋 まちづくりにおける 「協働」と「学び」	[31D09] 萩原豪 桑茶の生産を通じた地 域連携と ESD 展開	総合 討論
E 会場 312 講義室	環境 活動 (実践)	[31E07] 山田貴浩 鳴き砂の調査活動を軸 とした地域との連携に よる環境教育	[31E08] 森谷昭一 用水路からみた地域の 環境課題と自治会の役 割	[31E09] 大島順子 やんばるに生息する野 生生物の交通事故対策 に関する地域住民の意 識 ー運転者に対する 注意喚起としての看板 の役割に関する聞き取 り調査からー	総合 討論

9月1日(日): 9:00~9:55

会場	テーマ	9:00~	9:15~	9:30~	9:45~
A会場 202 講義室	自然 体験 (研究)	[01A01] 村井伸二 自然観察会の設立経緯 と再定義の試み及び展 望への提言 - 時代の 変化と共に持続可能で 多様なあり方とは -	[01A02] 中本貴規 幼児期における自然体 験を通じたコミュニケ ーションの可能性	[01A03] 岡健吾 アイヌ文化学習として の自然体験活動に関す る研究 - SLE 研究の 視座から -	総合 討論
B会場 212 講義室	博物館 と博物 展示施 設 (研究)	[01B01] 田村憲司 ミュージアムパーク茨 城県自然博物館におけ るボランティアの教育 普及活動	[01B02] 佐々木啓 ネットリサーチにみる ビジターセンターに対 する意識とニーズ	[01B03] 松本朱実 ミュージアムを拠点と した連携によるESDの 可能性と動向	総合 討論
C会場 223 講義室	気候変 動・気 候適応 (研究)	[01C01] 野口扶美子 「気候適応にむけた在 来知の活用」を考える: 公正・公平で対等な対 話と協働の観点から	[01C02] 秦範子 ミュニシパリズムの実 践の可能性と課題: バ ルセロナ市民政党的政 策を事例として	[01C03] 藤岡達也 SDGs と人新世を踏ま えた地球環境教育の構 築	総合 討論
D会場 302 講義室	環境教 育の歩 み (実践)	[01D01] 石崎一平 私は「環境教育」とい うアイデアを通して何 を探究してきたのか: 私の歩みと心の消息	[01D02] 鳥屋尾健 自然学校の質的深化と 広がり ~KEEP協会の 環境教育事業 40年 の歩みから~	[01D03] 林美帆 参加型学習と公害経験 の継承 -みずしま地 域カフェと『水島メモ リーズ』 -	総合 討論
E会場 312 講義室	英語報告部会 (詳細は p. 28)				
F会場 323 講義室	奨励賞審査 (詳細は p. 28)				

9月1日(日): 10:00~10:55

会場	テーマ	10:00~	10:15~	10:30~	10:45~
A会場 202 講義室	海洋に 関わる 教育 (研究)	[01A04] 堀江慧悟 三重県鳥羽市におけ る海洋教育プログラ ムの構築・実施とそ の影響調査	[01A05] 森元真理 海洋ごみ問題を題材 とした教材デザイン	[01A06] 大屋進之介 小学校の海洋教育が児童 の海への意識に与える影 響 - 事前事後アンケート による効果検証 -	総合 討論
B会場 212 講義室	メディ アの活 用 (研究)	[01B04] 早川礎子 多文化共生保育と絵 本の環境教育につい て - 日本と韓国の 比較を通して	[01B05] 原理史 デジタルアースを活 用した ESD 実践とそ の効果 ~ 高校地理総 合における事例研究 ~	[01B06] 大原尚之 Conservation Photography は日本で生まれるか 自 然写真家らの語りから見 つめなおす日本の自然写 真・ネイチャーフォトの環 境メディア史	総合 討論
C会場 223 講義室	環境問 題・生 物多様 性 (研究)	[01C04] 浅岡永理 ユネスコスクールに おける「生物多様性」 に関する教育の量的 分析 - 中学校・高等 学校を中心に -	[01C05] 東照晃 レイチェル・カーソン の自然への想いと化 学物質	[01C06] 北久保希愛 若い地域住民の生物多様 性保全意欲に影響を与 える要素の相対的評価	総合 討論
D会場 302 講義室	参加型 学習 (実践)	[01D04] 石田浩基 “参加する”企画展 示による環境学習効果 の発現	[01D05] 林浩二 市民参加による野外 解説板制作とその発 展	[01D06] ニノ宮リムさち 持続可能な暮らしと自然 を守る地域・市民運動とシ ティズンシップ - ESD と しての環境教育の現代的 可能性と課題を考える	総合 討論
E会場 312 講義室	英語報告部会 (詳細は p. 28)				

9月1日(日): 11:00~11:55

会場	テーマ	11:00~	11:15~	11:30~	11:45~
A会場 202 講義室	学習 評価 (研究)	[01A07] 富田俊幸 特別活動を中心とした SDGs - ESD の混合研 究法による評価	[01A08] 小玉敏也 中山間地域の学校にお ける ESD の評価研究	総合討論	
B会場 212 講義室	科学技 術に関 わる方 法論 (研究)	[01B07] 工藤充 ESD への存在論的議論 の導入に向けた試論	[01B08] 福井智紀 思考ツールの現状と意 思決定・合意形成を支 援するための「参加型 思考ツール」の可能性	総合討論	
C会場 223 講義室	社会変 革・社 会参画 (研究)	[01C07] 福田美紀 持続可能な開発目標 (SDGs) 実施プロセス における意義あるユー ズの参画	[01C08] 森朋子 シビック・アクション の実践を伴う環境教育 プログラムの展開	[01C09] 齊藤由倫 学生の自己効力感と国 の SDGs 進捗に関する 一考察 一社会変革に 向けた環境教育の可能 性一	総合 討論
D会場 302 講義室	課題 解決 (実践)	[01D07] 岡山咲子 環境課題解決人材の育 成に向けた全学副専攻 「環境サステナビリテ ィ実践学」の設置	[01D08] 内藤光里 京都市における脱炭素 ライフスタイルを広げ る活動の実践と評価	[01D09] 松田剛史 エシカル消費をテーマ とした学生の PBL 活動	総合 討論

●口頭発表（英語報告部会）

※登壇者（筆頭者）として登録された1名のみ氏名を掲載しています。

9月1日（日）：9:00～11:00

会場	9:00～	9:15～	9:30～
E会場 312 講義室	[01E01] Chiemi Saito Creativity among Children: The Wokober Learning Approach	[01E02] Adella Anfidina Putri The Current 'Merdeka' Curriculum in Indonesia: Implications for Environmental Education.	[01E03] Siyuan Wang Sustainability, Transformative Learnig and Non-goevernmental Organizations in China: Practices and Challenges

会場	9:45～	10:00～	10:15～
E会場 312 講義室	[01E04] Gegenduoren Zhang The Cross-Cultural Dissemination of Environmental Education: Feasibility of the Japanese ASAZA Fund Practices in Chinese Elementary Schools	[01E05] Hyun Kim Analysis of Secondary Social Studies and Science Textbooks on Climate Change in Korea and Japan	[01E06] Kelvin Tang Assessing climate change conceptions among Japanese early-adolescents

会場	10:30～
E会場 312 講義室	[01E07] Daffa Afiz Habibillah Climate Change in The Textbook: Academic Evaluation of Indonesian Climate Change Education (CCE) in Lower Secondary School Textbooks

●口頭発表（奨励賞審査）

9月1日（日）：9:00～10:00

会場	9:00～	9:05～	9:22～	9:39～
F会場 323 講義室	挨拶	[01F01] 安井紬 環境教育プログラムのセ オリー・プロセス・イン パクト評価；政策評価理 論と M-GTA を用いて	[01F02] 深澤陸 森林への感受性強化を志 向した地下足袋での森林 散策体験の効果検証	[01F03] 宇都宮俊星 農業を取り巻く社会的課 題を基盤とした探究学習 の取り組み

●ポスター発表

8月31日(土) 9:00~13:00 (コアタイム 12:00~13:00)・9月1日(日) 9:00~13:00

※登壇者(筆頭者)として登録された1名のみ氏名を掲載しています。

<ポスター会場:211 講義室>

【研究発表】

- P 研 01 桑原大輝 日本国内の脱炭素促進に向けた投資についてインパクト投資と脱炭素のマッチングを検討
- P 研 02 張蝶 鋼鉄企業のカーボンニュートラル
- P 研 03 甲田紫乃 脱炭素社会に向けた取り組みに関する事例研究
- P 研 04 楊ショウ 電気自動車電源としての再生可能エネルギー活用の可能性
- P 研 05 張露 LCA法による農産廃棄物再利用の環境効果分析 ―トウモロコシワラに着目―
- P 研 06 WANG ZIHAN 日中企業による環境情報開示の比較研究
- P 研 07 長島優斗 放置竹林に関する認知・経験・関心の状況及び竹林に関するNPO法人の活動内容
- P 研 08 王イブン コーヒー粕水抽出液中のカフェインがコマツナの成育におよぼす影響
- P 研 09 比嘉俊 日本における外来生物の普及啓発
- P 研 10 楊坡 日本における外来生物による環境破壊 ～「外来生物法」の改正に中心を検討～
- P 研 11 中村心寧 神奈川県丹沢山域における生物多様性普及のための意識調査 ―生物文化多様性に着目して―
- P 研 12 岩西哲 ラムサール条約登録湿地における小中学生を対象とした環境学習プログラムの評価
- P 研 13 山本康介 地域の自然・生物を生かした体験プログラムが対象者に与える影響 ―三重県鳥羽市海洋教育推進事業を対象として―
- P 研 14 本田尚大 動物園における教育効果向上策について ―デジタルコンテンツの活用という観点から―
- P 研 15 大野堅慎 水族館の訪問による環境配慮行動に及ぼす影響
- P 研 16 二井菜月 身近な動物に対する関心及び苦手な動物への関わり方の許容程度と意欲
- P 研 17 鈴木一正 福島原発事故における保養プログラム:コロナ禍前後の実施状況の比較

【実践報告】

- P 実 01 阿河真人 生物多様性地域戦略市民案は行政の生物多様性地域戦略策定を加速できるか? ~東京都江東区での活動報告~ (その2)
- P 実 02 倉田薫子 生物多様性を自分事とするために 段階的・多角的ワークショップの実践と研究
- P 実 03 安藤匡哉 環境教育プログラムにおける各要素を変更した学習効果の比較検証 ―異なる説明タイミングが学習効果へ及ぼす影響―

- P 実 04 明石野乃香 自然環境と生活との距離感が環境教育における環境の捉え方に及ぼす影響—ケニア現地小学校での調査を通して—
- P 実 05 佐藤裕司 持続可能な地域コミュニティづくりに資する博物学の共創 —小学校余裕教室の活用を例に—
- P 実 06 藤井徳子 すべての子どもに自然を！プロジェクト ～乳幼児期の豊かな自然体験を保障する仕組みの社会実装をめざして～
- P 実 07 吉澤樹理 保育内容指導法（環境）におけるネイチャーゲーム実施前後の環境意識の変容
- P 実 08 森嶋佳織 栃木県における自然体験活動支援のための保育動画コンテンツの開発
- P 実 09 小畑チハル 子ども学専攻学生による食環境教育プログラム開発と実践
- P 実 10 福田らら 木育教室「地域材でつくろう」の開発・実施・評価
- P 実 11 高橋一秋 木育プログラム「木工クラフト～えんぴつストラップ作り～」の開発・実施・評価
- P 実 12 ヨウショウ 環境教育のための草木染の活用
- P 実 13 丸本倍美 水銀を身近なものと捉えてもらうための取り組み

●自主課題研究

※代表者として登録された1名のみ氏名を掲載しています。

8月29日(木): 12:00~14:00 (オンライン)

インタープリター・トレーニングの時流 ~人材育成の実際と研究から~ (増田直広)

9月1日(日): 15:30~17:30 (対面)

202 講義室 自主課題研究①

気候変動教育を進めるための教育のプログラムとシステムを考える (白井信雄)

212 講義室 自主課題研究②

希望を創る環境学習を求めて (木俣美樹男)

222 講義室 自主課題研究③

「地域をつくるまなび」としての現代的公害学習 —巨大物流・データセンター開発に抗するVRシミュレーションを用いた市民運動の事例から (二ノ宮リムさち)

223 講義室 自主課題研究④

「市野谷の森」の保全にみる市民活動の役割と今後の方向性を考える (川北裕之)

302 講義室 自主課題研究⑤

公害教育のこれまでとこれからを考える —「公害教育」研究会についての意見交換 (古里貴士)

312 講義室 自主課題研究⑥

「環境教育」というアイデアを通して何を探究してきたのか ~環境教育の探究世界の地図づくりの試み~ (続) (安藤聡彦)

321 講義室 自主課題研究⑦

質的研究法を学ぶ 11 ~質的研究を進めていく上でどのように困難な壁を乗り越えていくか~ (高橋宏之)

322 講義室 自主課題研究⑧

社会変革のための環境教育を考える (秦範子)

問合せ先

一般社団法人日本環境教育学会第 35 回年次大会（千葉）実行委員会事務局

E-mail chiba2024@jsfee.jp

※年次大会に関するお問合せ・ご連絡は、こちらのメールアドレスへお願いいたします。

一般社団法人日本環境教育学会第 35 回年次大会（千葉）ウェブサイト

<https://www.jsfee.jp/members/meeting/113-annual-meeting/601>

一般社団法人日本環境教育学会事務局

株式会社インフォテック内

〒206-0033 東京都多摩市落合 2-6-1

電話 042-311-3355 ファクス 042-311-3356 E-mail office@jsfee.jp

一般社団法人日本環境教育学会ウェブサイト <http://www.jsfee.jp/>

Contact Information (for inquiries)

Conference Organizing Committee for the 35th Annual Meeting of the Japanese Society for Environmental Education (Chiba)

E-mail: [chiba2024\[at\]jsfee.jp](mailto:chiba2024[at]jsfee.jp) (please change [at] to @)

Inquiries related to the annual meeting should also be directed to the above e-mail address.

Webpage for the 35th Annual Meeting of the Japanese Society for Environmental Education (Chiba):

<https://www.jsfee.jp/members/meeting/113-annual-meeting/601>

Secretariat for the Japanese Society for Environmental Education

infotec Co. Ltd.

2-6-1 Ochiai, Tama City, Tokyo, 206-0033, Japan

Tel: +81-42-311-3355

Fax: +81-42-311-3356

e-mail: [office\[at\]jsfee.jp](mailto:office[at]jsfee.jp) (please change [at] to @)

webpage for JSfEE: <https://www.new.jsfee.jp/>